

IWAI/NG/42-I/2016

MINUTES OF THE PRE-BID MEETING FOR DESIGN, CONSTRUCTION, SUPPLY, TESTING & COMMISSIONING OF FRP BOATS FOR WATER TAXI SERVICE AT YAMUNA RIVER, DELHI AT HEAD OFFICE, NOIDA ON 11.11.2016 FROM 4:00 TO 5:00 P.M.

Bidder – 1

Sl. No.	Section	Tender Condition	Bidder Queries / Suggestion / Request	IWAI Reply
1.		As per bid meeting scheduled on 11/11/2016 & last date for tender submission is fixed on 18/11/16,	<p>(a) It is requested that last date for tender submission to be extend at least 3 weeks after the issue date of pre bid minutes. This will facilitate to work out the details as per the outcome of pre bid meeting</p> <p>(b) As GST is likely to implement from Apr. 17 hence, flexibility to be given on taxation and will be applicable at the time of delivery.</p>	<p>(a) The last date for submission online of the tenders has been extended up to 23.12.2016 (3:00 pm). However, hard copy of the bid should also be delivered on the same date for reference purpose only.</p> <p>(b) Taxes as applicable will be reimbursed after production of proof of deposit.</p>
2.			<p>Delivery of the boats to be made as follows:</p> <p>(a) 20 Pax 1st boat: 10 month after receipt of the firm order from IWAI and receipt of 1st stage payment.</p> <p>(b) 20 Pax 2nd boat: 12 months after receipt of the firm order from IWAI and receipt of 1st stage payment.</p>	<p>Proposal not accepted. Tender condition remains same for 25 Pax & 40 Pax vessels.</p>

Aravind

*Jriddh
20/12/16*

20/12

			(c) 40 Pax Boat: 13 months after receipt of the firm order from IWAI and receipt of 1 st stage payment.	
3.			As per the Govt. norms, NSIC registered firms are exempted from EMD. Please confirm the same is applicable in this tender also.	EMD exemption not permitted.
4.			Regarding payment terms: it is proposed that 10% of the order to be released along with PO. It will facilitate to mobilize the resources to undertake the work in advance pace.	The Payment terms for 4.2 (e), page no. 77 has been deleted. 4.2 (d) modified as 30% instead of 20%.
5.		Refer page 13 of 116, point no. 9.2	Along the amendment, tender copy & pre bid minutes also to be submitted with technical bid duly signed & stamped by the bidder	The bids are to be uploaded online on or before 23.12.2016. Hardcopy may be submitted for reference only. Tender copy & pre bid minutes also has to be submitted with technical bid duly signed & stamped by the bidder.
6.		Refer page no 73 of 116, para 25.1	Please indicate for which equipment's / machinery ON BOARD SPARES to be supplied confirming to class requirements.	The manufacturer's recommended spares for 2000 hrs. operation for the machineries is to be supplied with each boat. The standard tools supplied by the manufacturer are also to be supplied to IWAI.
7.		Refer page no. 89 of 116, para 4.0.22 seating arrangement	Please send us the drawing as mentioned for our knowledge to meet your requirements	Vessel of 25 Pax drawing is available on page 86 of tender document. Further the GA drawing for Vessel of 40 Pax and 25 Pax vessels are attached as Annex-1&2 as part of pre-bid

Prakash...

20/11/2012

20/12

8.			Class notation to be mentioned clearly and wave height to be specified	<p>clarifications.</p> <p>As the deployment of these vessels is in upstream of Wazirabad barrage where there are hardly any significant waves however, the current in the river during the flood season is 2-3 m/sec. The boats are to be built in accordance with the rules and requirement of classification society of Indian Register of Shipping (IRS). The boats are to be built under the supervision of class. The boats are to be registered under the appropriate authority under Inland Vessel Act, 1917 as passenger's vessel/boat.</p>
9.		Refer page 87 of 116, para 4.04	Regarding air conditioning, split AC will be provided	<p>Yes, split AC of atleast 2 X 2.0 T for 25 passenger boat and 2 X 2.5 T for 40 passenger boats to be provided. AC of suitable capacity for wheel house of 40 pax boat to be provided. Generator set of suitable capacity to take all electrical loads and 20% reserve power may be provided and to be atleast 10 KVA for 25 pax boat and 15 KVA for 40 pax boat.</p>

Arslani

20/12

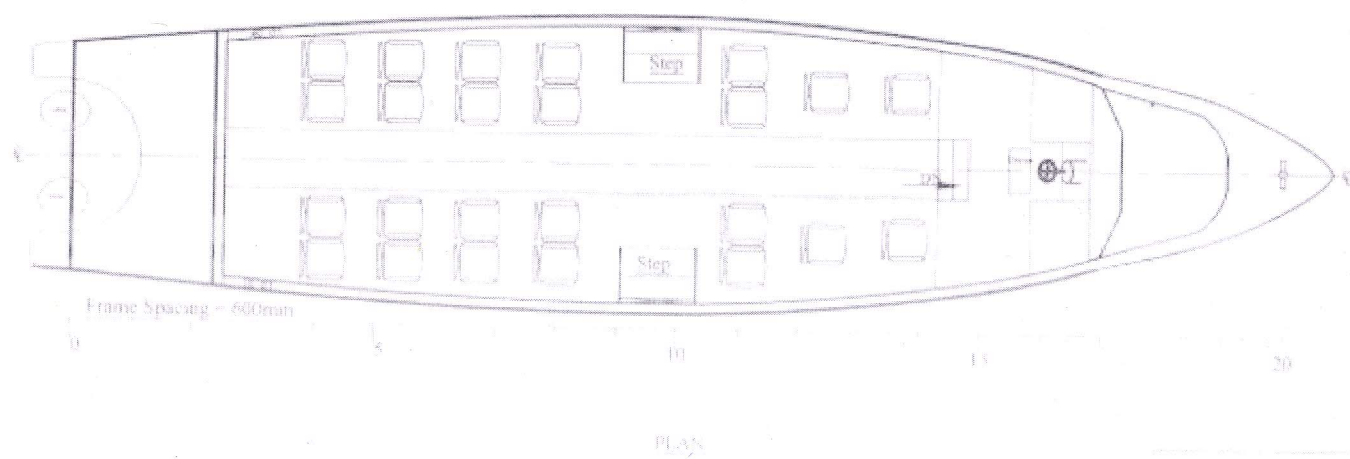
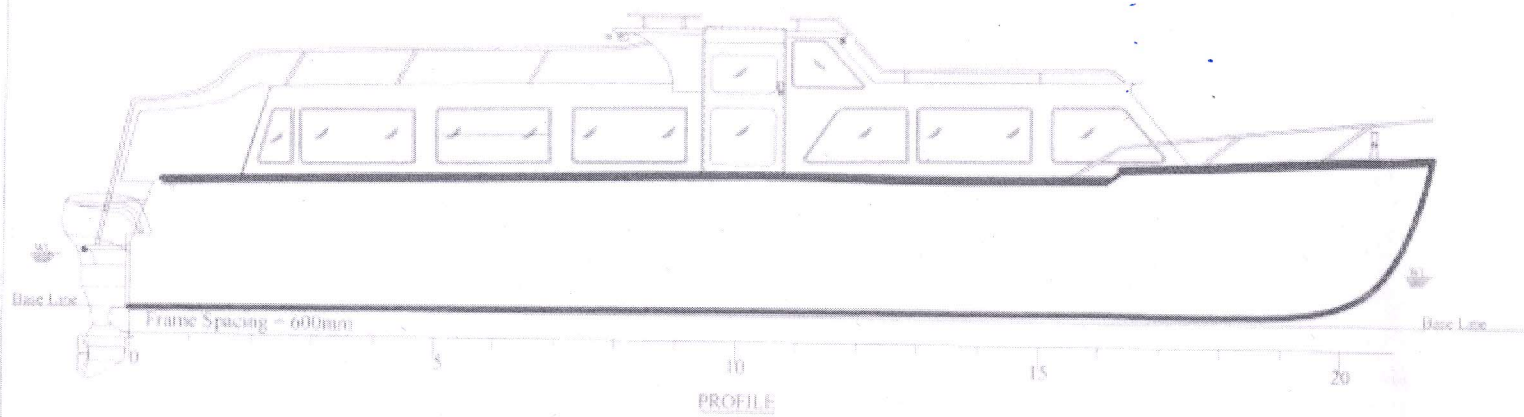
20/12

10.			<p>IWAI to specify clearly which are all the items / equipment's be get it approved by IWAI. In general we will meet / follow class requirements.</p>	<p>(1) Design and all drawings are to be approved by IRS, prior to execution. (2) As regards construction of boats, the boats is to be built under requirements, inspection and testing by class. Trials and commissioning to be in presence of Class Surveyor and IWAI, which will include all tests required under class including Speed and Maneuvering test. (3) Trials and commissioning will be undertaken in the presence of IWAI officials. (4) The bidder shall have obligation to obtain the approval of IWAI/IRS for various components.</p>
11.			<p>Tolerance for the main particulars to be highlighted or mentioned in pre bid meeting.</p>	<p>The dimensions/main particulars have been given as a range and maximum deviation or tolerance allowed will be + or - 10%. However, maximum draft as specified in the tender is to be complied with. The variation in tolerances shall however be subject to compliance of Vessel Stability.</p>

Asralani

20/12

20/12



MAIN PARTICULARS

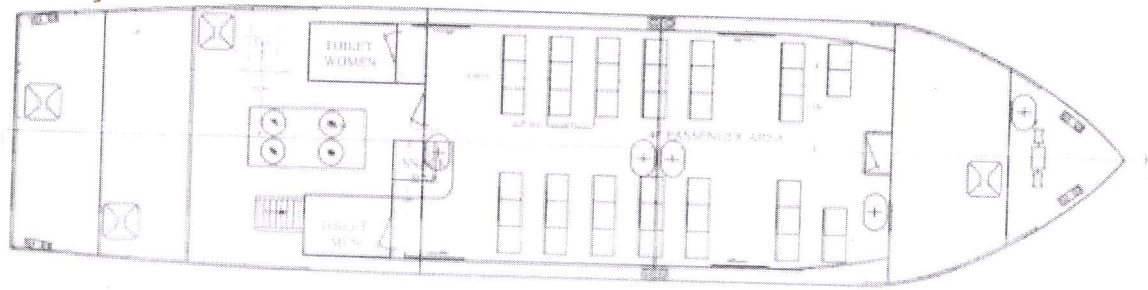
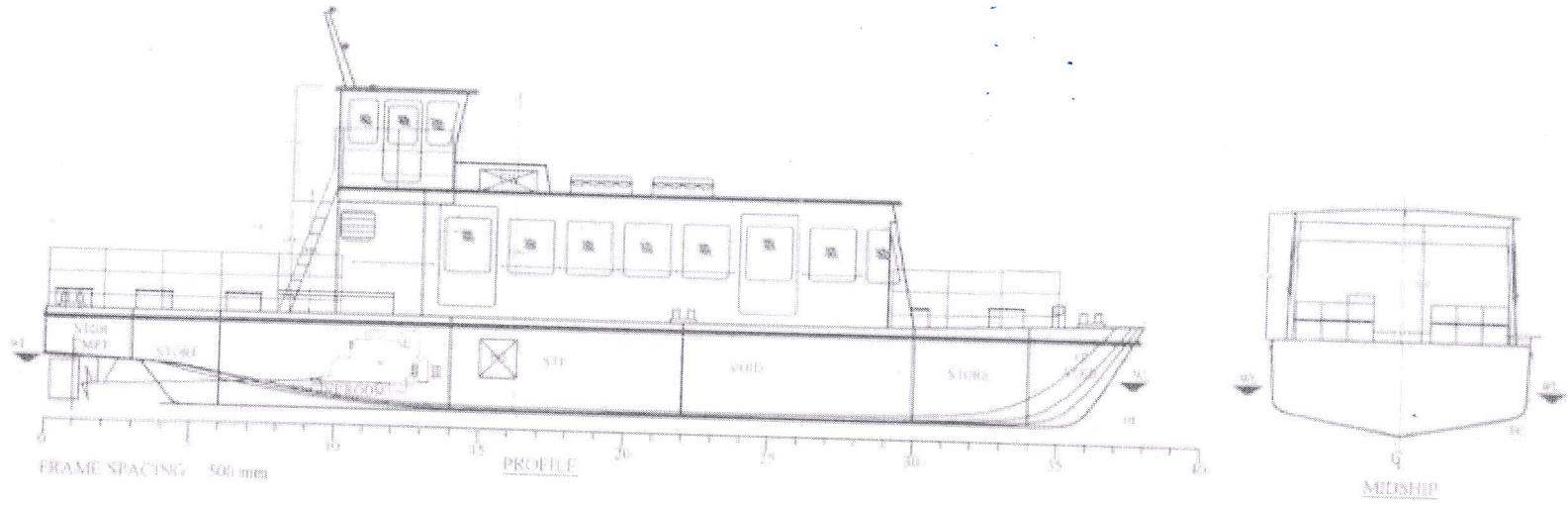
LENGTH	12.518 M
BREADTH	2.914 M
DEPTH MOULDED	1.1 M
DRAFT	0.50 M
AIR DRAFT	2.2 M
PASSENGER CAPACITY	25 Nos
ENGINE	40 HP x 2
SPEED	17 KNOTS
GENERATOR	5 KVA
A/C	1 (R) x 2

Arslani...
 20/11/2012
 20/11/2012

NO.	NAME	DATE	AGE

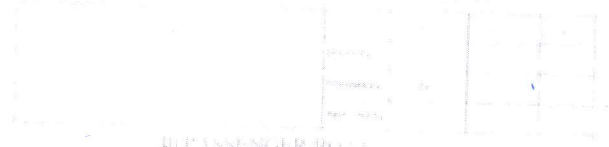
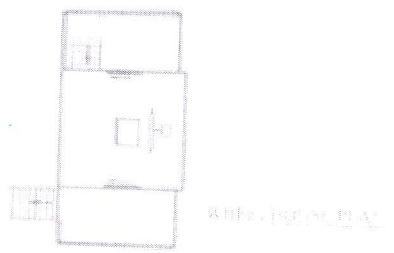
HOPON BOAT
 GENERAL ARRANGEMENT

12.518 M x 2.914 M x 1.1 M



PRINCIPAL PARTICULARS

LENGTH OVER ALL	19 M
BREADTH (MOULDED)	4.5 M
DEPTH (MOULDED)	1.6 M
DRAFT (MIDSHIP)	0.65 M
DISPLACEMENT	20.00 T
ENGINE	1 (KIP) @ 2000 rpm x 1 (AT M402)
GV RATIO	2.3
SPEED	8 KNOTS
PASSENGERS	40
CREW	5
SW	150 x 2
TW	300 x 1



Palani

20/12/12

[Signature]
20/12

PASSENGER BOAT
GENERAL ARRANGEMENT

SCALE: 1:50 (FOR 20 T DWT)

Bidder - 2

Sl. No.	Section	Tender Condition	Bidder Queries / Suggestion / Request	IWAI Reply
1.			Can the EMD be given in the form of a Bank Guarantee? If yes, please give us a format of the same	No, EMD cannot be given in the form of BG. Clause 5, of page 7 prevails.
2.	(page no. 27)		Is the Bill of quantity to be given pre or post bid	Hardcopy of BOQ needs not to be sent.
3.			Do you require the performance security to be valid for 13 or 25 months	The Performance Security to be valid upto the stipulated period of completion of warranty i.e. 24 months after delivery of all the boats plus 28 days beyond that.
4.	(page no. 75)		Is the warranty required for 12 or 24 months	This warranty/guarantee shall remain valid for 24 months from the date of issue of final taking over certificate by the accepting authority (Refer clause 25.1) – page 73 of tender document.
5.			Can we offer a Catamaran as they are more stable, spacious and safe. World over, Catamarans are used for more for ferrying passengers.	The tender specification is for mono hull boat. The catamaran boat if accepted at this stage will lead to change in dimensions and technical parameters and hence not accepted.
6.			The 13 m boat for 25 Pax should have at least 3.5 m to 4 m beam to accommodate 25 passengers. The current beam for 2.80 to 3.0 m is not proportionate to the length of the boat whereas the beam mentioned for the 40 Pax boat is proportionate to the length desired.	The design details pertaining to dimensions as indicated in the tender document would prevail along with the tolerance factor of + or – 10% max.

Prabhu...

su My 20/12

Ht 20/12

Bidder - 3

Sl. No.	Bidder Queries / Suggestion / Request	IWAI Reply
1.	<p>In reference to the recent tenders floated by IWAI for development work at Yamuna River from Soniya Vihar to Tronica city which includes development of floating jetties, fairway development and supply of FRP boats, the eligibility criteria allows participations of only single entities with minimum 7 years of experience and does not allow participation of any consortium.</p> <p>We are very much interested in the waterways business and are looking for an opportunity to enter in the same. But without consortium, it will not be possible for us to participate. We request you to relax this criteria, and allow a prospective Bidder led consortium to participate in all the 3 tenders for the following reasons:</p> <ol style="list-style-type: none">1. Prospective Bidder has vast experience in providing complete solution through feasibility studies, engineering, construction, operation and maintenance since last more than 50 years.2. Single point agency for all tenders can work with better co-ordination and faster speed.3. The consortium can provide the complete solution for development of River Yamuna from Soniya vihar to Tronica city. <p>Thus in view of the above, we request you to please examine our request and allow prospective Bidder accordingly.</p>	<p>As this is a very small project and the present qualification criteria does not allow participation of consortium. Hence, the tender condition shall prevail.</p>

Arabi...

July 20/12

[Signature]
20/12

Bidder - 4

Sl. No.	Section	Tender Condition	Bidder Queries / Suggestion / Request	IWAI Reply
1.			<p>We suggest Diesel Out Board Motor instead of Petrol Inboard Motor for 40/25 Seater Boat for the following reasons:</p> <ul style="list-style-type: none">• There is lot of maintenance in an inboard motor compared to an outboard motor.• There is a lot of difficulty in acquiring spares of inboard motor whereas the spares of outboard motor are available with ease.• In case an Inboard Motor fails you need to get the whole boat on shore for repair which is very difficult and costly affairs where as in case of Outboard Motor failure you just need get the outboard motor out and repair.• Emission of Diesel Outboard motor in 3 times less than that of Petrol inboard Motor.• Diesel is way cheaper than petrol and it is also less inflammatory compared to petrol.	<p>(1) The tender conditions for water taxi proposed for 25 passengers is outboard motor petrol and for 40 passengers is inboard diesel.</p> <p>(2) The vessel should have an endurance of 100 km & tank capacities may be provided accordingly.</p> <p>(3) Maximum Horsepower ratings of propulsion system for 25 pax boat is 2 nos. of 40 HP OBM (petrol engine) and for 40 pax boat is 1 nos. of 120 HP inboard diesel engine.</p>
2.			<p>We suggest OXE Diesel OBM s for your boats, please find the details attached below.</p>	<p>Tender conditions prevail.</p>
3.			<p>As per tender's requirement of 1 no. – 40 Seater Boat and 2 nos. – 25 Seater Boat. We strongly suggest that department should have 1 no. – 40 Seater Boat, 2 nos. – 15 Seater Boat, 2 nos. – 6 to 8 seater Boat and also 2</p>	<p>No change in Tender Condition.</p>

Aravali..

5th May 20/12

20/12

			nos. rescue Boat so that when there will be situation of not getting 40 people to onboard 40 seater boat in such situation of carrying lesser people in a big boat will result into a waste of government's money as there will be same amount of money spent for a trip. To neglect this above mentioned medium capacity boats are also recommended so that a trip can even get done with medium capacity of 8, 15 and 40 people. (Photos Attached for reference)	
4.		As per tender document, page no. 6. pt. 4 (e)	The firm must be original manufacturer of FRP boats having manufacturing facility and servicing yard in anywhere is India for the past 7 years or more. We suggest authorized dealers / distributors should also be allowed as there are many companies in India that deal with Imported boats and for a healthy competition.	Authorised dealers/distributors with experience as per pre-qualification criteria can participate in the tender.

Bidder - 5

Sl. No.	Section	Tender Condition	Bidder Queries / Suggestion / Request	IWAI Reply
1.			Too short time to prepare the tender document along with the technical details. Request to extend the bid submission date by 1 month.	The last date for submission online of the tenders has been extended up to 23.12.2016 (3:00 pm). However, hard copy of the bid should also be delivered on the same date for reference purpose only.

Prakash...

20/12/16

20/12


Additional Clarification/Information by IWAI


- (1) FFA & LSA to be provided as per rules / regulations of Class & Registering Authority. At least 30 Life Jackets & 5 child Life Jackets for 25 pax vessel and 50 Life Jackets & 10 child Life Jackets for 40 pax has to be provided.
- (2) The Engine requirement for 25 pax and 40 pax vessels are as mentioned below:


ENGINE REQUIREMENTS

Sl No	Engine	HP
1	25 Seater	40HPX2 No's = 80HP
2	40 seater	120 HP

- (3) For 40 pax boats with inboard engine, Hydraulic steering system is needed. Steering control, starting and reversing needs to be provided in the wheel house in the forward above the main deck.
- (4) As per class requirement, the anchoring system is to be provided for 25 pax and 40 pax vessels.
- (5) The insurance for the vessels at the time of Hull and Manufacturing is to be in joint names of owner & contractor.


(V.C. Dialani)
Director (Marine)


(S.V.K. Reddy)
Chief Engineer


(Alok Ranjan)
Member (Finance)